



ANNEX 5 FLOWCHARTS



Back to work,

taking care of me and taking care of you!

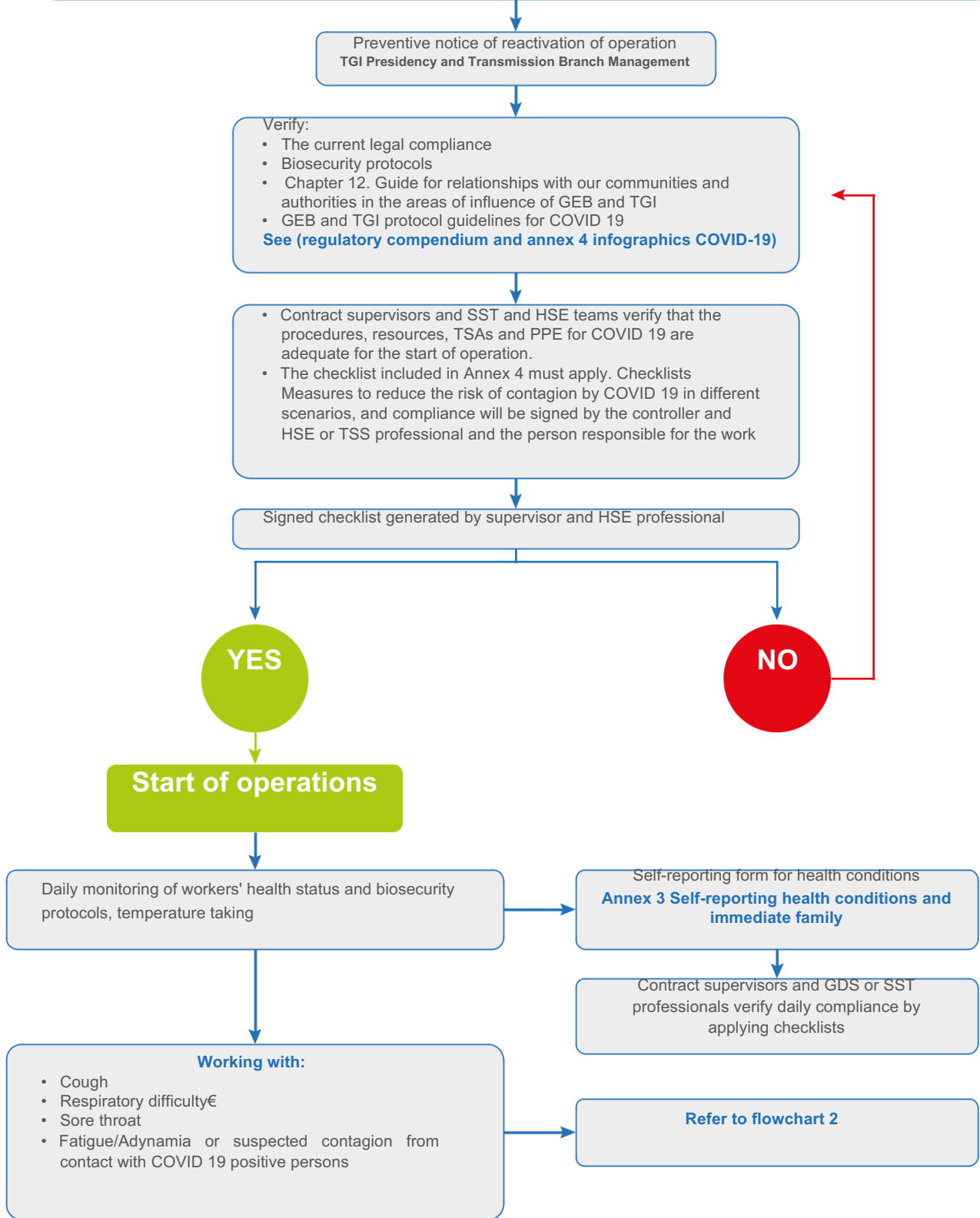


 PROTOCOL FOR REACTIVATING CONSTRUCTION, OPERATION AND MAINTENANCE
PROJECTS AND ADMINISTRATIVE PROCESSES FOR THE **COVID19** EMERGENCY
TRANSMISSION BRANCH, TGI AND CORPORATE



Flowchart 1. Reactivation of operative and administrative fronts

SEE PROTOCOL FOR REACTIVATING CONSTRUCTION, OPERATION AND MAINTENANCE PROJECTS AND ADMINISTRATIVE PROCESSES FOR THE COVID19 EMERGENCY - TRANSMISSION BRANCH, TGI AND CORPORATE



Flowchart 1. Suspect of contagion

Where you in contact with a person diagnosed with COVID-19 or have suspicions of contagion

YES

NO

END

Do you have at least one of the following 2 symptoms:

- Fever above or equal to 37,5°
- Cough
- Respiratory difficulty
- Sore throat
- Fatigue/Adynamia or suspected infection

YES

Information necessary for the report:

- Full name
- Age
- Identification document number
- Mobile number
- Email
- Include pre-existing conditions if any

Call:

- Minhealth: 01 8000 95 55 90 / 031 -330 50 41 / Mobile: 192
- Bolivar Line #322 Option 1
- Telemedicina Bolivar: 3571680 Option 1
- Contact your EPS:
 - » FamiSana: 302 360 4618
 - » Nueva EPS: 317 429 9133
 - » Medimas: 316 833 2635
 - » Compensar: 316 471 2713
 - » Salud Total: 316 471 2713
 - » Other EPS: 316 833 4482

Report immediately to your supervisor and also inform:

- HSE and STT professional of the work site and GDS TGI professional:
 - Jhon Henry Carrillo**
 - Mobile: 318 437 3614
 - Email: Reportesalud@tgi.com.co
- GEB Doctor:
 - Manuel Saenz**
 - Mobile: 312 450 9144
 - Email: reportesalud@geb.com.co

- HSE - SST Professional will update the Covid-19 matrix for monitoring employees' health conditions.ˆ
- Validate the online report of each work site employees so that they complete the self-report of health conditions prior to entry and execution of the activities.
- Follow-up of cases that generate medical alert will be reviewed through the medical help desk.ˆ

- Isolate yourself from colleagues or family members
- Take preventative measures to prevent the spread of the virus in the workplace or your home environment.
- Use face masks

Warning notification to the Sustainable Development Management and Human Management

Follow-up of the case by the help desk medical/professionals GDS and SST, Human Resources and ARL

Medial help desk meeting TGI/GEB



Flowchart 3. Employee with suspected symptoms of COVID 19

Employee with suspected respiratory symptoms

